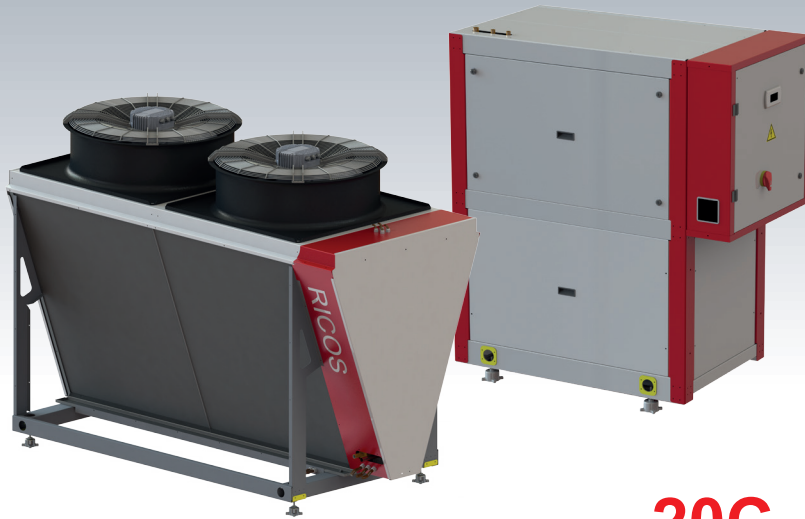


# MURANO BAW

## AIR TO WATER HEAT PUMP (SPLIT TYPE)

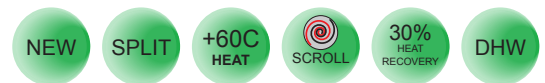


Heat pump SPLIT designs for the production of chilled/hot water with sealed scroll compressors operating on environmentally safe refrigerant. This equipment is equipped with axial EC fans, copper-aluminum capacitor, plate brazed heat exchanger and electronic expansion valve. The case is made of galvanized and painted steel. The MURANO BAW heat pump is ideal for heating and cooling industrial, office, commercial buildings, hotels, as well as hot water production in large residential buildings. The system is designed for operation at outdoor temperatures below -20 °C.

### OPTIONS

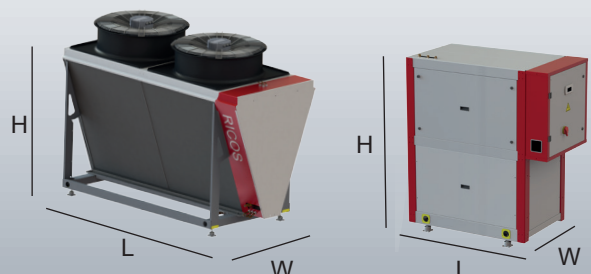
SS - soft start  
PR - partial heat recovery

**-20C**



MURANO BAW/ST (SPLIT)			0602	0702	0902	1303
<b>PERFORMANCE</b>						
COOLING CAPACITY (ACCORDING TO EN14511)	(2)	kW	56,26	63,66	82,42	120,63
ELECTRIC CONSUMPTION	(2)	kW	17,67	19,83	25,90	38,64
EER	(2)		3,18	3,21	3,11	3,12
ESEER	(2)		4,59	4,63	4,31	4,69
THERMAL CAPACITY (ACCORDING TO EN14511)	(1)	kW	63,72	72,24	94,38	137,04
ELECTRIC CONSUMPTION	(1)	kW	15,13	17,01	22,72	33,26
COP	(1)		4,21	4,25	4,15	4,12
THERMAL POWER (50 / 55C)	(3)	kW	58,98	67,14	84,82	127,23
ELECTRIC CONSUMPTION	(3)	kW	22,45	25,05	32,52	47,84
COP	(3)		2,63	2,68	2,61	2,66
HEATER HEATING RANGE		°C	+30/+60			
POWER SUPPLY		V/Ph/Hz	380 / 3 / 50			
MINIMAL TEMPERATURE WORKING IN HEAT MODE		°C	-20			
<b>FREON</b>						
CIRCUITS		шт	1	1	1	1
COMPRESSORS		шт	2	2	2	3
<b>HEAT EXCHANGER OF THE CONSUMER</b>						
WATER CONSUMPTION IN HEATING MODE	(1)	m³/h	11,03	12,58	16,37	23,78
PRESSURE DROP	(1)	kPa	22,1	21,7	25,6	33,8
WATER CONSUMPTION IN COOLING MODE	(2)	m³/h	9,78	10,99	14,25	20,77
PRESSURE DROP	(2)	kPa	19,2	18,3	21,4	28,3
<b>NOISE</b>						
SOUND POWER OF THE OUTDOOR UNIT		dB(A)	71	72	82	83
SOUND POWER IN THE INTERNAL UNIT		dB(A)	66	66	68	68
<b>DIMENSIONS</b>						
WEIGHT OF THE INNER UNIT		kg	408	410	428	502
WEIGHT OF THE OUTDOOR UNIT		kg	160	190	290	345
INNER UNIT DIMMENSIONS	(WxLxH)	mm	796x1530x1686			
OUTDOOR UNIT DIMMENSIONS	(WxLxH)	mm	750 x 2100 x 1400	750 x 3100 x 1400	1060 x 2340 x 1540	1060 x 3385 x 1540

- (1) HEATING: Water temperature (IN/OUT) 30°C/35°C;  
Air temperature +2°C - 87% RH
- (2) COOLING: Water temperature (IN/OUT) 12°C/7°C;  
Air temperature +35°C
- (3) Heating DHW in SUMMER: Water temperature (IN/OUT) 50°C/55°C;  
Air temperature +20°C - 45% RH



**RICOS**

www.RICOS-EUROPE.com

# MURANO BAW

## AIR TO WATER HEAT PUMP (SPLIT TYPE)

### HEATING POWER OF MURANO BAW/ST 0602

OPTIONS	WATER, C					
		+7C	0C	-5C	-10C	-20C
Heating capacity, kW	30/35	63,72	55,38	48,08	42,56	31,98
Power consumption, kW		15,13	14,91	14,75	14,23	14,05
COP		4,21	3,71	3,26	2,99	2,28
Heating capacity, kW	40/45	60,98	52,80	46,44	41,58	32,2
Power consumption, kW		18,27	18,11	18,03	17,41	17,13
COP		3,34	2,92	2,58	2,39	1,88
Heating capacity, kW	50/55	58,98	50,58	45,24	43,08	33,08
Power consumption, kW		22,45	22,37	22,33	21,61	21,33
COP		2,63	2,26	2,03	1,99	1,55

### HEATING POWER OF MURANO BAW/ST 0702

OPTIONS	WATER, C					
		+7C	0C	-5C	-10C	-20C
Heating capacity, kW	30/35	72,24	63,06	54,98	48,86	36,88
Power consumption, kW		17,01	16,79	16,60	15,99	15,57
COP		4,25	3,76	3,31	3,06	2,37
Heating capacity, kW	40/45	69,28	60,20	53,06	46,04	36,74
Power consumption, kW		20,51	20,29	20,09	19,31	18,61
COP		3,38	2,97	2,64	2,38	1,97
Heating capacity, kW	50/55	67,14	57,64	51,48	49,02	37,12
Power consumption, kW		25,05	24,77	24,53	23,57	22,63
COP		2,68	2,33	2,10	2,08	1,64

### HEATING POWER OF MURANO BAW/ST 0902

OPTIONS	WATER, C					
		+7C	0C	-5C	-10C	-20C
Heating capacity, kW	30/35	94,38	81,24	69,78	65,76	46,96
Power consumption, kW		22,72	22,22	21,78	20,96	20,28
COP		4,15	3,66	3,20	3,14	2,32
Heating capacity, kW	40/45	90,26	76,38	67,36	61,32	46,94
Power consumption, kW		26,94	26,42	26,08	25,10	24,20
COP		3,35	2,89	2,58	2,44	1,94
Heating capacity, kW	50/55	84,82	73,00	65,34	63,18	47,60
Power consumption, kW		32,52	32,10	31,80	30,62	29,62
COP		2,61	2,27	2,05	2,06	1,61

### HEATING POWER OF MURANO BAW/ST 1302

OPTIONS	WATER, C					
		+7C	0C	-5C	-10C	-20C
Heating capacity, kW	30/35	137,04	120,03	104,76	93,03	71,52
Power consumption, kW		33,26	32,33	31,37	30,47	29,54
COP		4,12	3,71	3,30	3,05	2,42
Heating capacity, kW	40/45	133,53	116,58	101,04	91,98	71,37
Power consumption, kW		39,41	38,75	38,18	36,71	35,42
COP		3,39	3,01	2,65	2,51	2,01
Heating capacity, kW	50/55	127,23	110,88	99,24	90,15	72,30
Power consumption, kW		47,84	47,27	46,82	44,99	43,55
COP		2,66	2,35	2,12	2,00	1,66